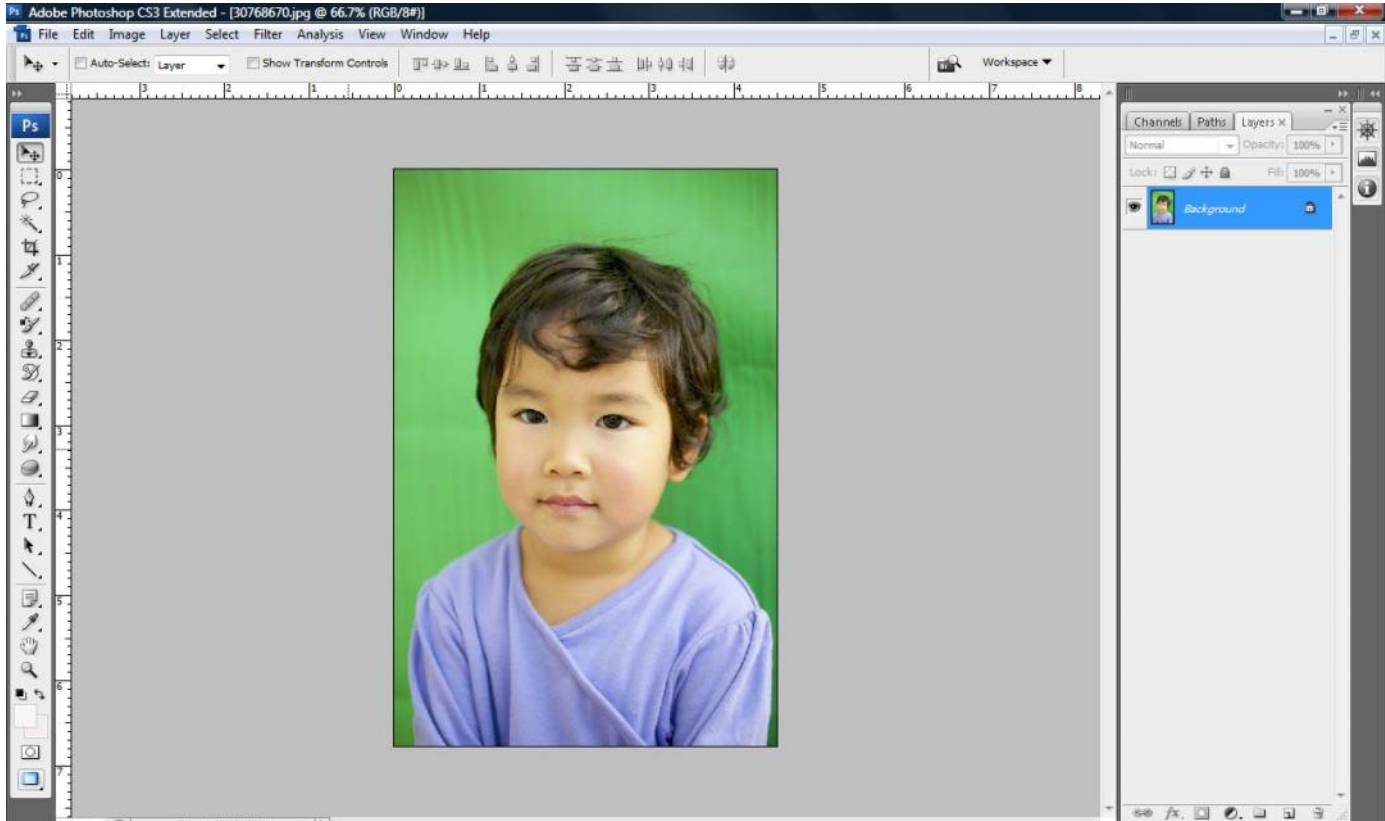


PHOTOSHOP TUTORIAL

HOW TO USE DIGITAL BACKDROPS

Step 1: Open any picture with Adobe Photoshop.



First make background layer into new layer, by double -clicking background layer in the Layers Window, and then click OK. (or go to Layers/Duplicate Layer from Menu Bar.) Then disable or delete the original background layer.

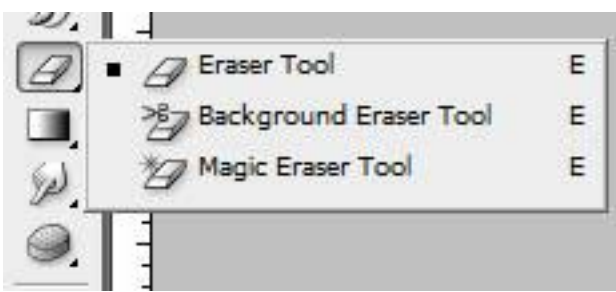
You will need to extract the photo from background.

If the background is not uniform just follow these steps:

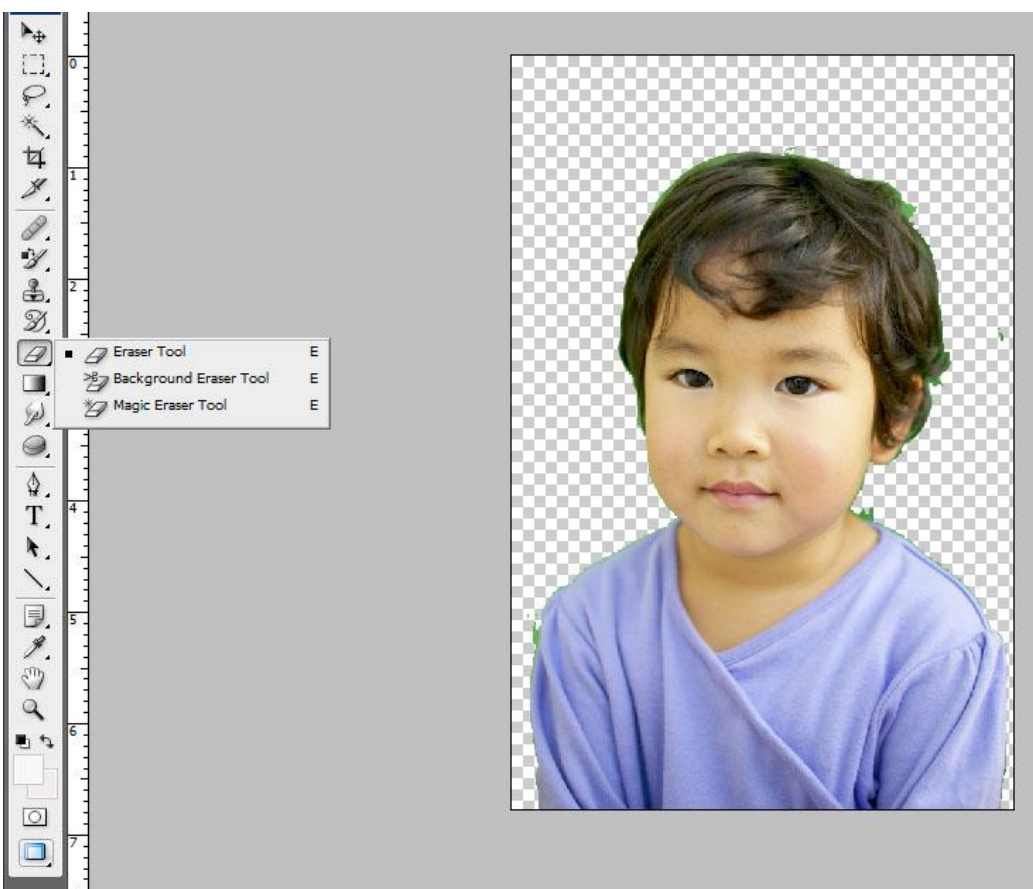
- Use the Magnetic Lasso Tool, or other Lasso and Marquee Tools to trace around and highlight the subject of your photo.
- Then Invert the Selection (*choose Select > Inverse from Menu Bar*).
- Remove background by pressing Delete on the keyboard.

If the background is not uniform just follow these steps:

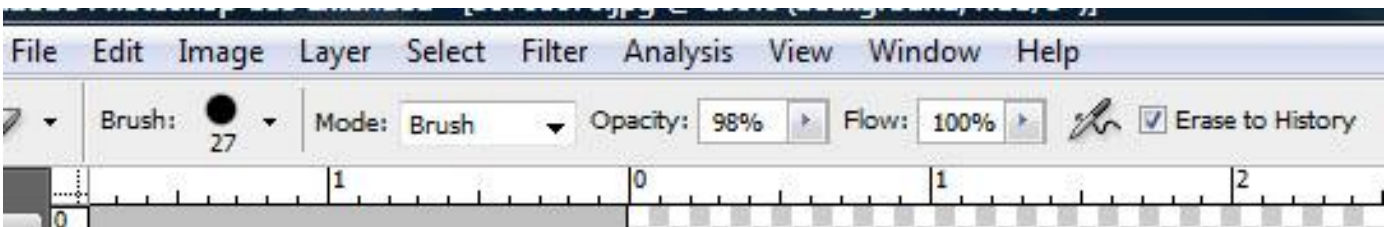
Use "Magic Eraser Tool" to instantly select and delete similar areas of the background.



Select "Eraser Tool" to clean up the image. You can do a right click and choose a lower hardness percentage.



If the “Magic Eraser Tool” has deleted a portion of your photo, you can check the “Erase to History” option from the top menu of “Eraser Tool” and it will automatically restore the missing parts to original aspect.



Once you are done, open the selected backdrop in Photoshop, then drag and drop your photo layer on it.

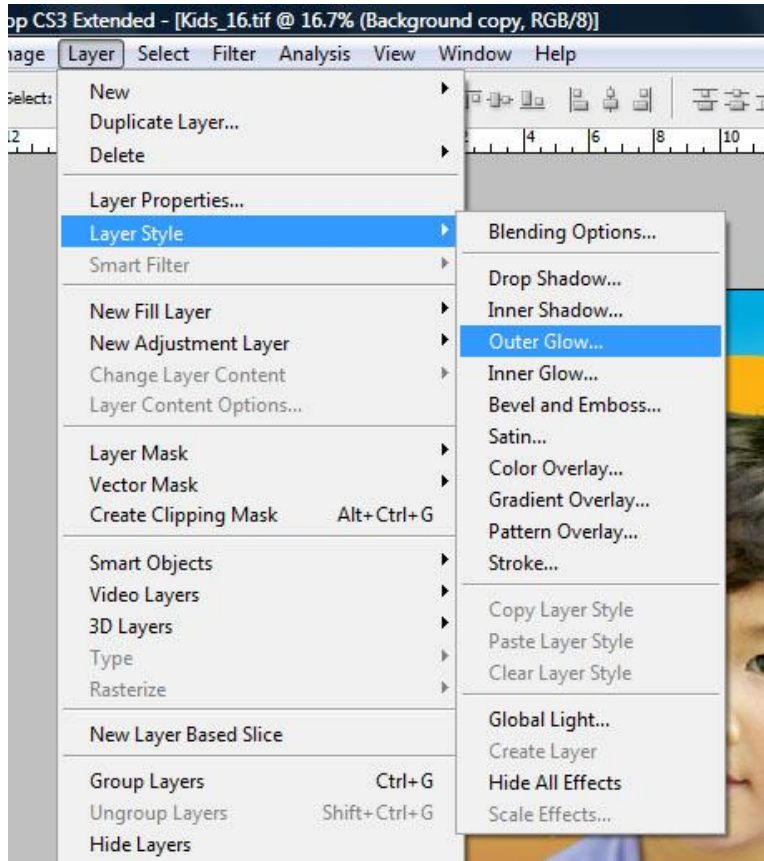


Next, use the “Free Transform Tool” (CTRL+T) or Edit/Free Transform. Make sure to hold Shift Key while resizing the photo layer in order to keep the original aspect ratio and prevent distortion.

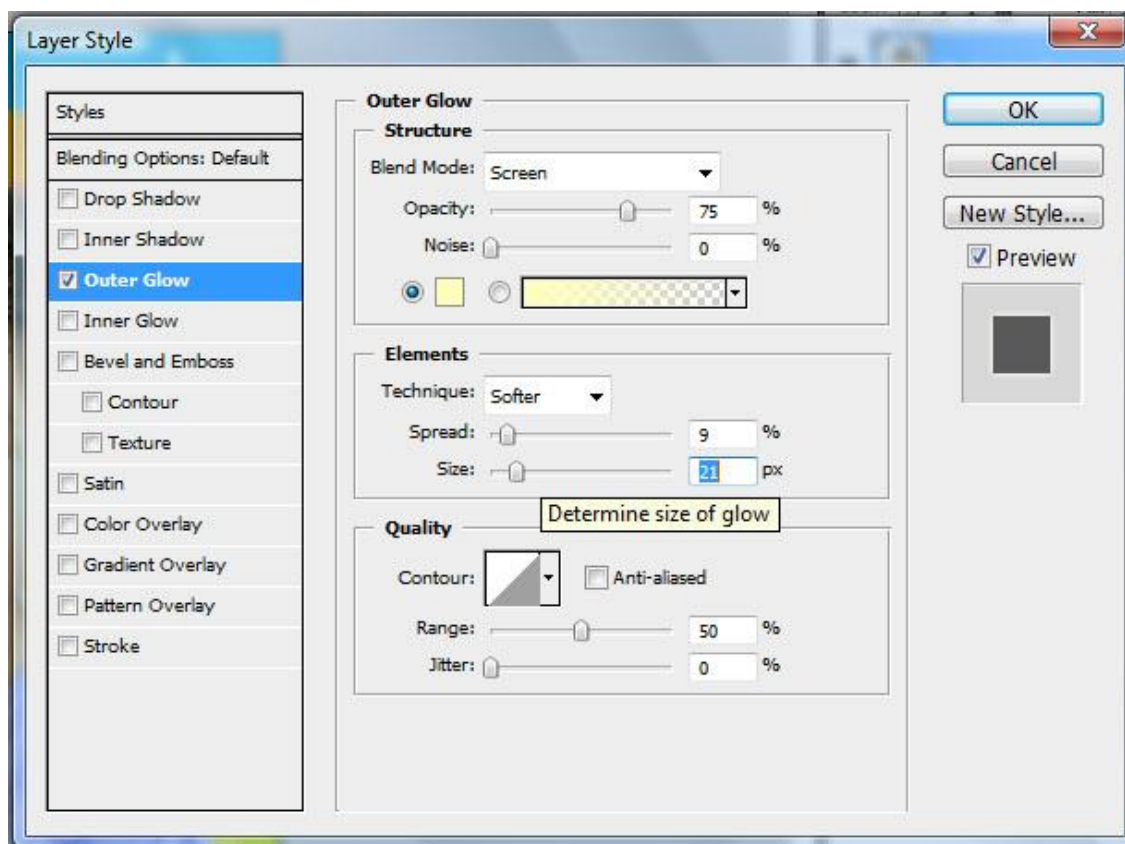


Press Enter when you finished and select Apply.

Next, you can add some layer style effects to your photo. Go to Layer/Layer Style and select any effect you would like to add and personalize (for example Outer Glow).



From this Menu you can personalize Outer Glow Size and Spread to fit your needs. Play with any other effects like shadows, contours, etc.





Congratulations! The Job Is Done! **Now you are ready to print the results.**

Useful Tips:

- Always make sure to have the right layer selected in the Layers Palette before starting any action.
- Hold SHIFT key while using Free Transform tool to resize your image. This will prevent distorting original aspect ratio.

Thank you!

Copyright © ArtcoDesign - www.artcodesign.com